

APPENDIX A

MAPS

Appendix A of this report includes a variety of maps of Block 1 of San Jose, including the Sanborn insurance maps of the block, maps of the archaeological excavations and the recovered features, and combinations of these maps. These maps were not included in the Feature Summaries (Appendix D) in this report to avoid unnecessary duplication.

Map A.1.

“Block 1 Location (USGS San Jose East, Calif. 1980 and San Jose West, Calif. 1980).” In Laffey, Glory Ann. 1993. *Lot Histories for the Block 1 Chinatown San Jose, California*. Figure 1. San Jose: Archives and Architecture. Document # 3004-RPT.

Map A.2.

“Block 1 Lot Configurations with Adobe Dwellings (Lyman 1848; Hendry and Bowman 1940).” In Laffey, Glory Ann. 1993. *Lot Histories for the Block 1 Chinatown San Jose, California*. Figure 2. San Jose: Archives and Architecture. Document # 3004-RPT.

Maps A.3a-A.3f

“Block 1 Lot Configurations and Major Owners 1800-1889.” In Laffey, Glory Ann. 1993. *Lot Histories for the Block 1 Chinatown San Jose, California*. Figure 3. San Jose: Archives and Architecture. Document # 3004-RPT.

Map A.3a

“Block 1 Lot Configurations and Major Owners 1800-1889: 1800-1839.” In Laffey, Glory Ann. 1993. *Lot Histories for the Block 1 Chinatown San Jose, California*. Figure 3. San Jose: Archives and Architecture. Document # 3004-RPT.

Map A.3b

“Block 1 Lot Configurations and Major Owners 1800-1889: 1840-1849.” In Laffey, Glory Ann. 1993. *Lot Histories for the Block 1 Chinatown San Jose, California*. Figure 3. San Jose: Archives and Architecture. Document # 3004-RPT.

Map A.3c

“Block 1 Lot Configurations and Major Owners 1800-1889: 1850-1859.” In Laffey, Glory Ann. 1993. *Lot Histories for the Block 1 Chinatown San Jose, California*. Figure 3. San Jose: Archives and Architecture. Document # 3004-RPT.

Map A.3d

“Block 1 Lot Configurations and Major Owners 1800-1889: 1860-1869.” In Laffey, Glory Ann. 1993. *Lot Histories for the Block 1 Chinatown San Jose, California*. Figure 3. San Jose: Archives and Architecture. Document # 3004-RPT.

Map A.3e

“Block 1 Lot Configurations and Major Owners 1800-1889: 1870-1879.” In Laffey, Glory Ann. 1993. *Lot Histories for the Block 1 Chinatown San Jose, California*. Figure 3. San Jose: Archives and Architecture. Document # 3004-RPT.

Map A.3f

"Block 1 Lot Configurations and Major Owners 1800-1889: 1880-1889." In Laffey, Glory Ann. 1993. *Lot Histories for the Block 1 Chinatown San Jose, California*. Figure 3. San Jose: Archives and Architecture. Document # 3004-RPT.

Map A.4.

"Block 1 of San Jose." In Sanborn Map and Publishing Company. 1884. *Insurance Map of San Jose, California*. New York: Sanborn Map and Publishing Company.

Map A.5.

"Block 1 of San Jose." In Sanborn Map and Publishing Company. 1890. *Insurance Map of San Jose, California*. New York: Sanborn Map and Publishing Company.

Map A.6.

"Block 1 of San Jose." In Sanborn Map and Publishing Company. 1915. *Insurance Map of San Jose, California*. New York: Sanborn Map and Publishing Company.

Map A.7.

"Block 1 of San Jose." In Sanborn Map and Publishing Company. 1915-1950. *Insurance Map of San Jose, California*. New York: Sanborn Map and Publishing Company.

Map A.8.

"Previous Block 1 Archaeological Test Areas (Fee et al. 1981, Johnson et al. 1985:50, 61, Fig. 5-6)." In Laffey, Glory Ann. 1993. *Lot Histories for the Block 1 Chinatown San Jose, California*. Figure 8. San Jose: Archives and Architecture. Document # 3004-RPT.

Map A.9.

"Archaeological Features at Block 1, 1985-1987." In Parsons, Jeff. 1993. Summary of Observations on Soils and Cultural Features recovered in downtown San Jose. Figure 3. CITY: Geo-Archaeology. Document # 3003-RPT.

Map A.10.

"Block 1 Feature Locations 1884 (Parsons 1993: Fig. 2-3; ARS various; Roop et al. 1988; CSJ 1983; Sanborn 1884)." In Laffey, Glory Ann. 1993. *Lot Histories for the Block 1 Chinatown San Jose, California*. Figure 5. San Jose: Archives and Architecture. Document # 3004-RPT.

Map A.11.

"Block 1 Feature Locations 1890 (Parsons 1993: Fig. 2-3; ARS various; Roop et al. 1988; CSJ 1983; Sanborn 1890)." In Laffey, Glory Ann. 1993. *Lot Histories for the Block 1 Chinatown San Jose, California*. Figure 6. San Jose: Archives and Architecture. Document # 3004-RPT.

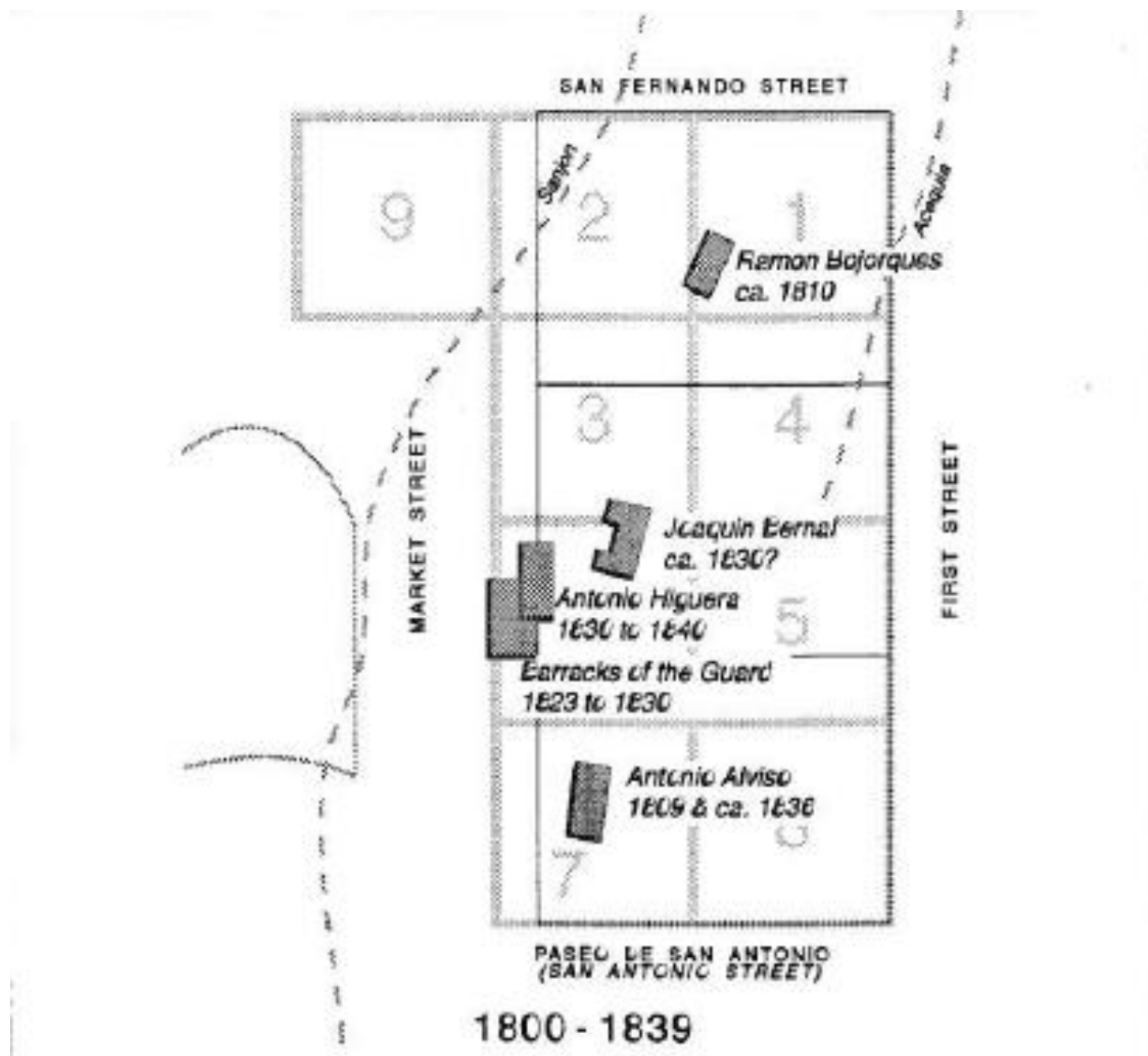
Map A.12.

"Block 1 Feature Locations 1929 (Parsons 1993: Fig. 2-3; ARS various; Roop et al. 1988; CSJ 1983; Sanborn 1929)." In Laffey, Glory Ann. 1993. *Lot Histories for the Block 1 Chinatown San Jose, California*. Figure 7. San Jose: Archives and Architecture. Document # 3004-RPT.

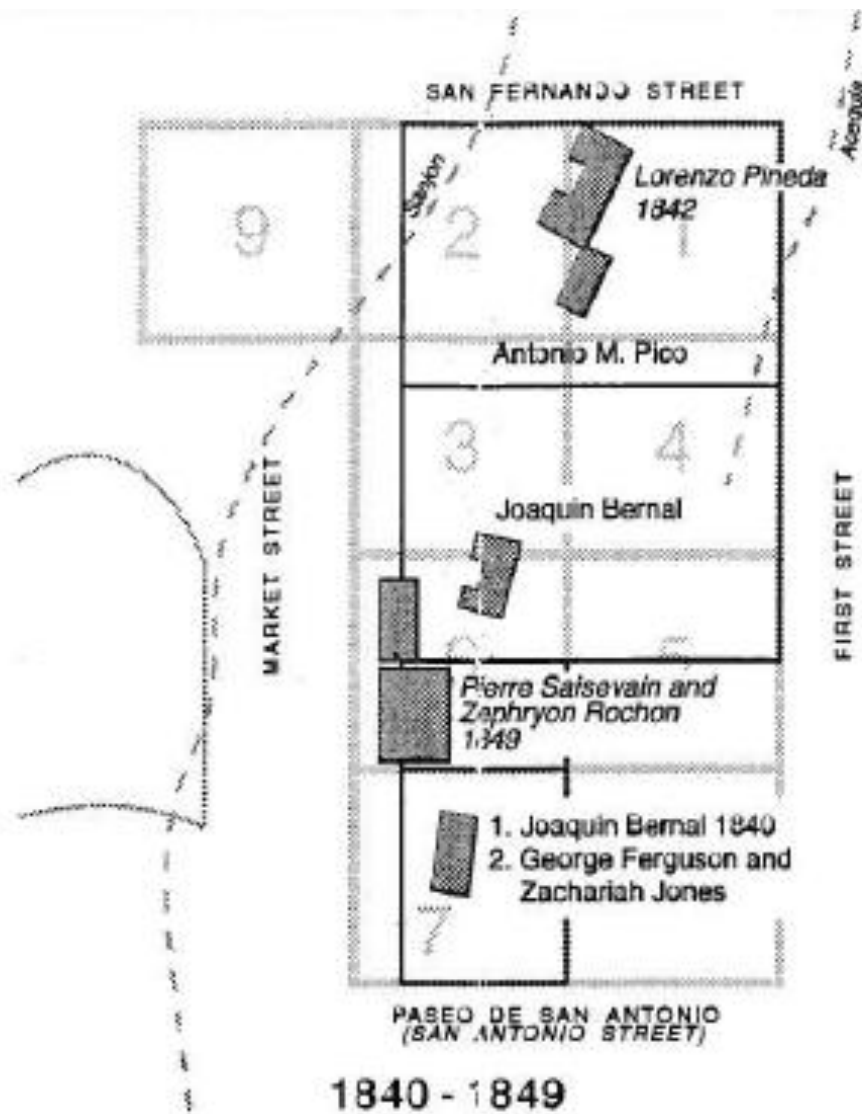




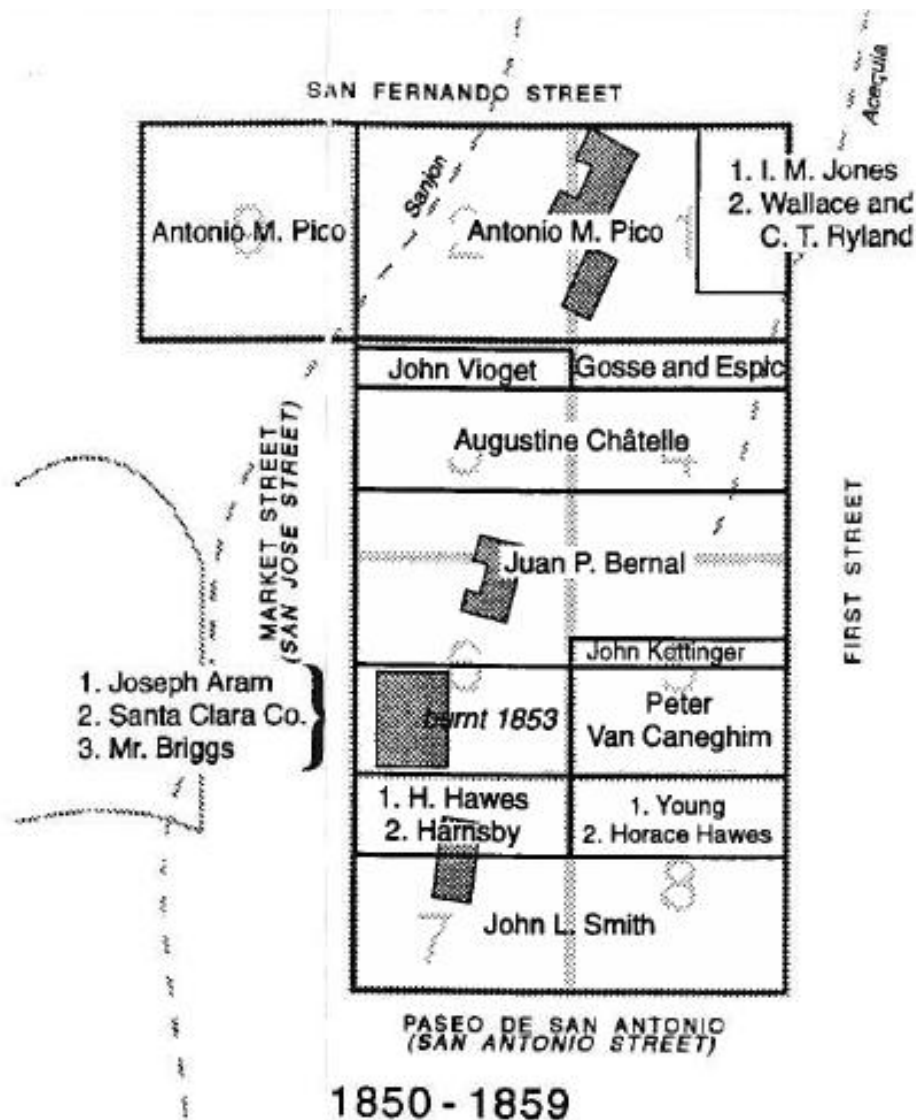
Map A.2. Block 1 Lot Configurations with Adobe Dwellings (Lyman 1848; Hendry and Bowman 1940)



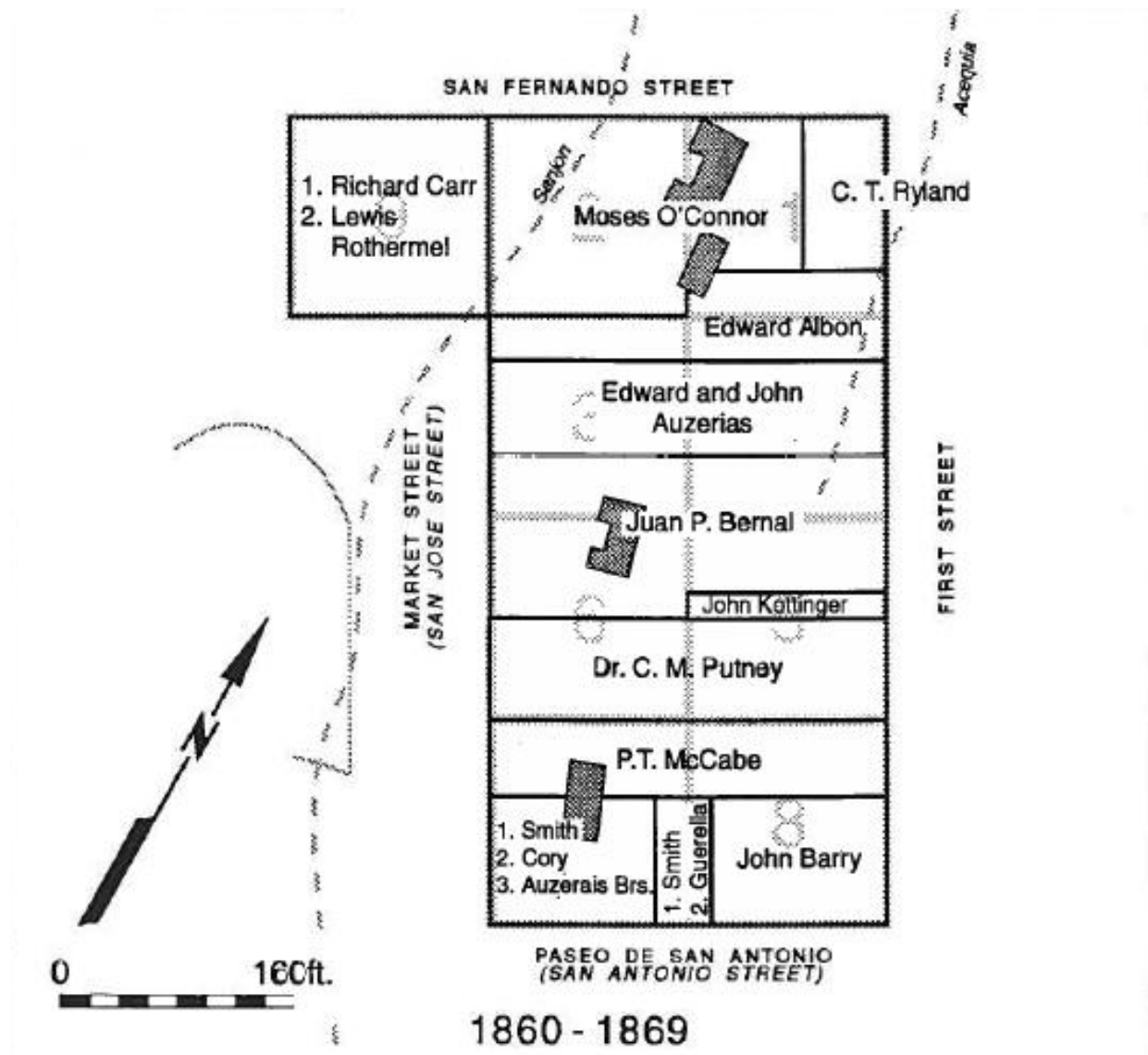
Map A.3a. Block 1 Lot Configurations and Major Owners 1800-1889: 1800-1839



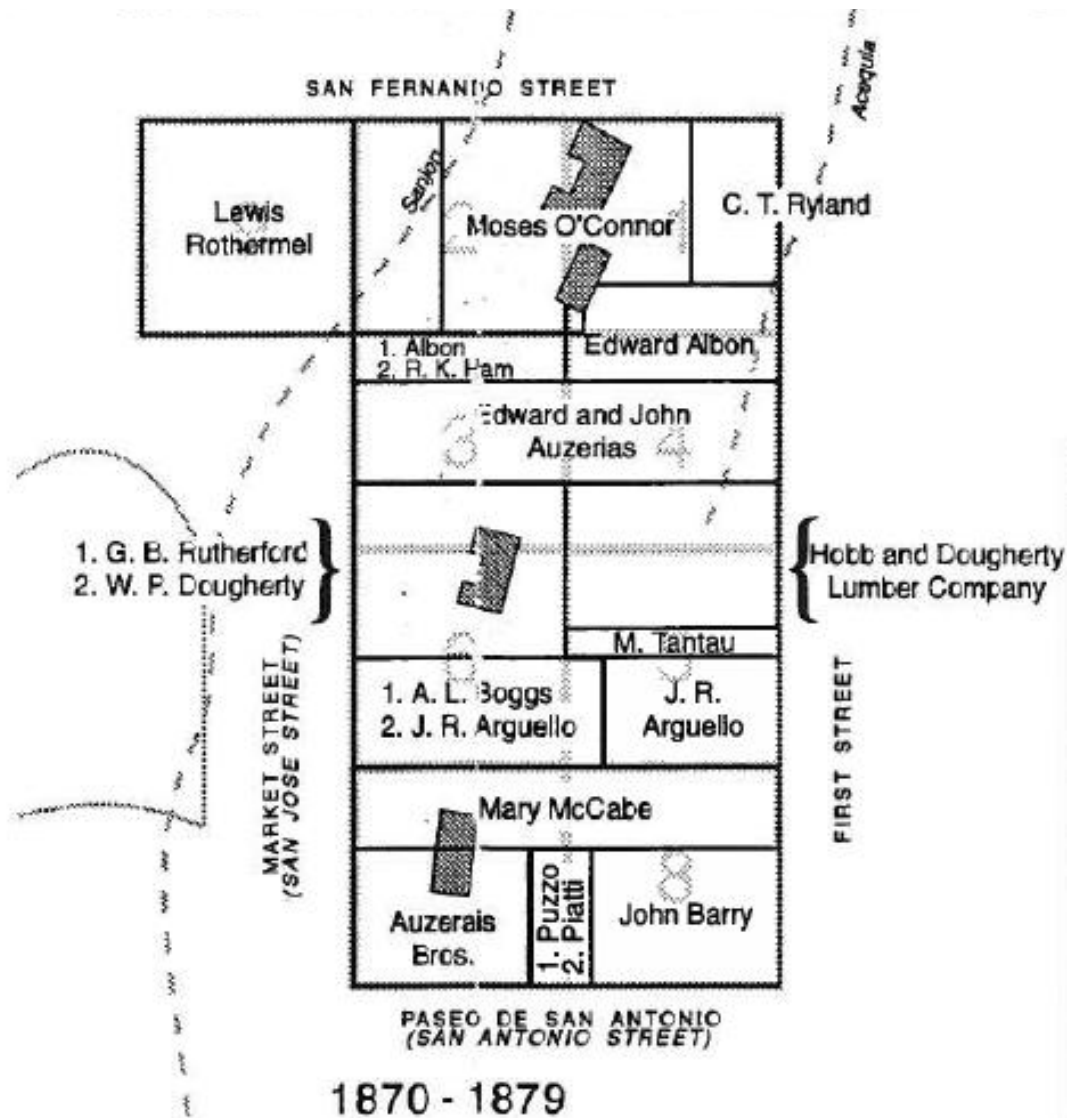
Map A.3b. Block 1 Lot Configurations and Major Owners 1800-1889: 1840-1849



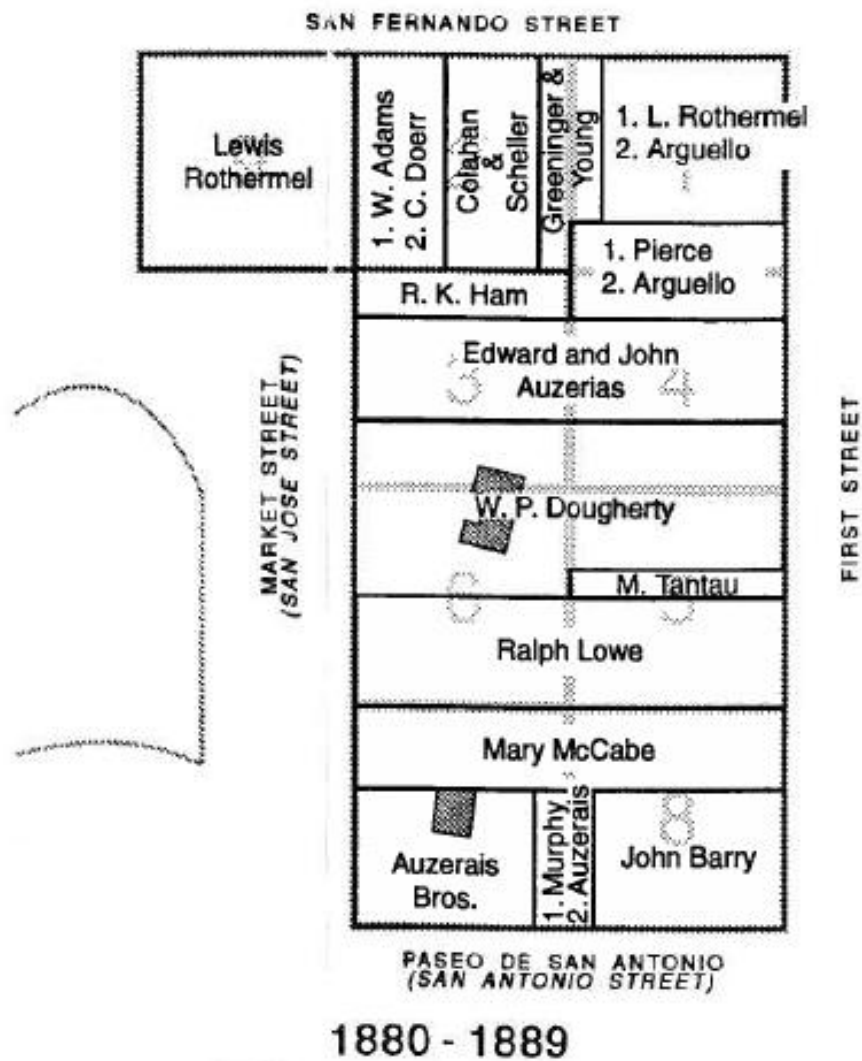
Map A.3c. Block 1 Lot Configurations and Major Owners 1800-1889: 1850-1859



Map A.3d. Block 1 Lot Configurations and Major Owners 1800-1889: 1860-1869



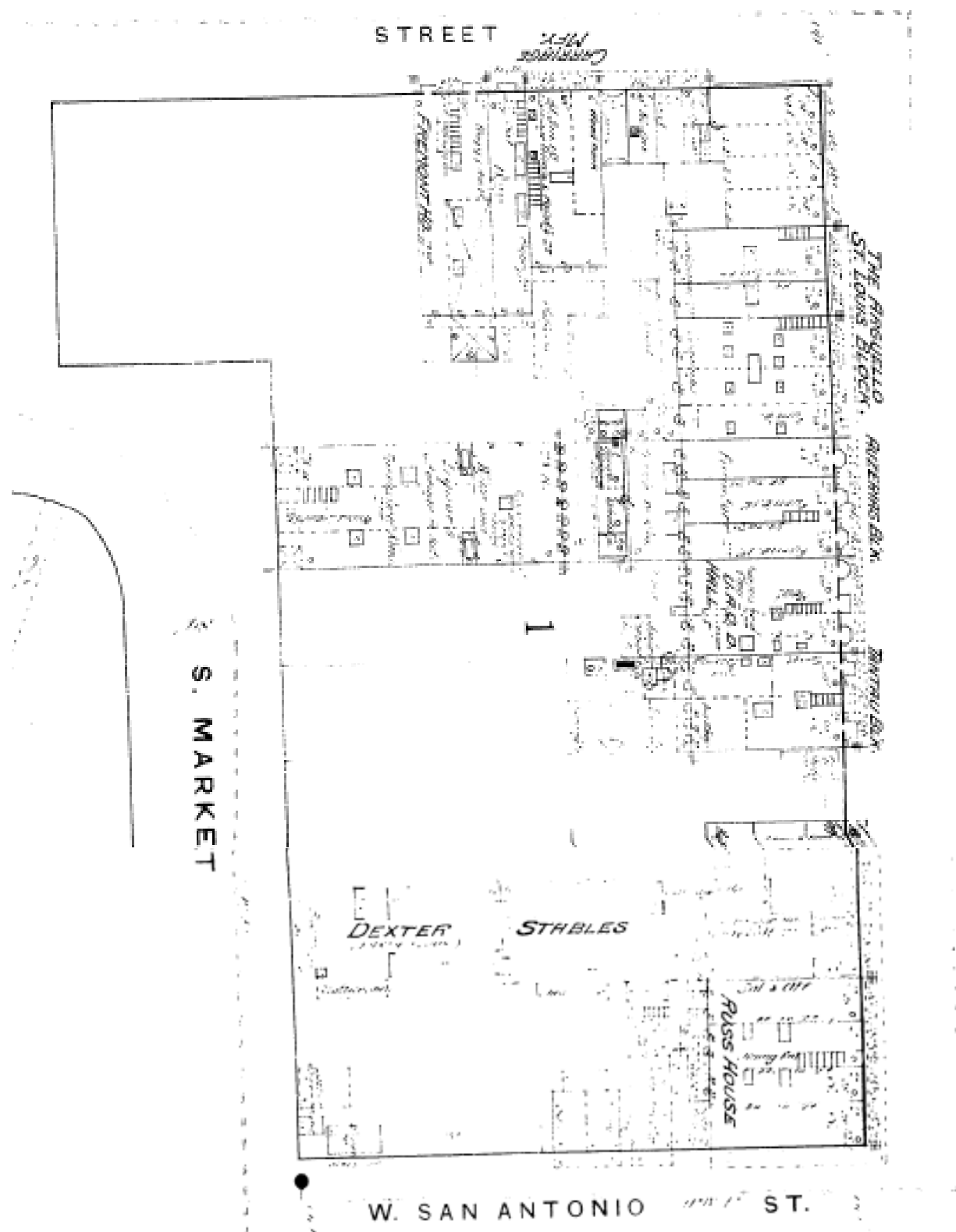
Map A.3e. Block 1 Lot Configurations and Major Owners 1800-1889: 1870-1879



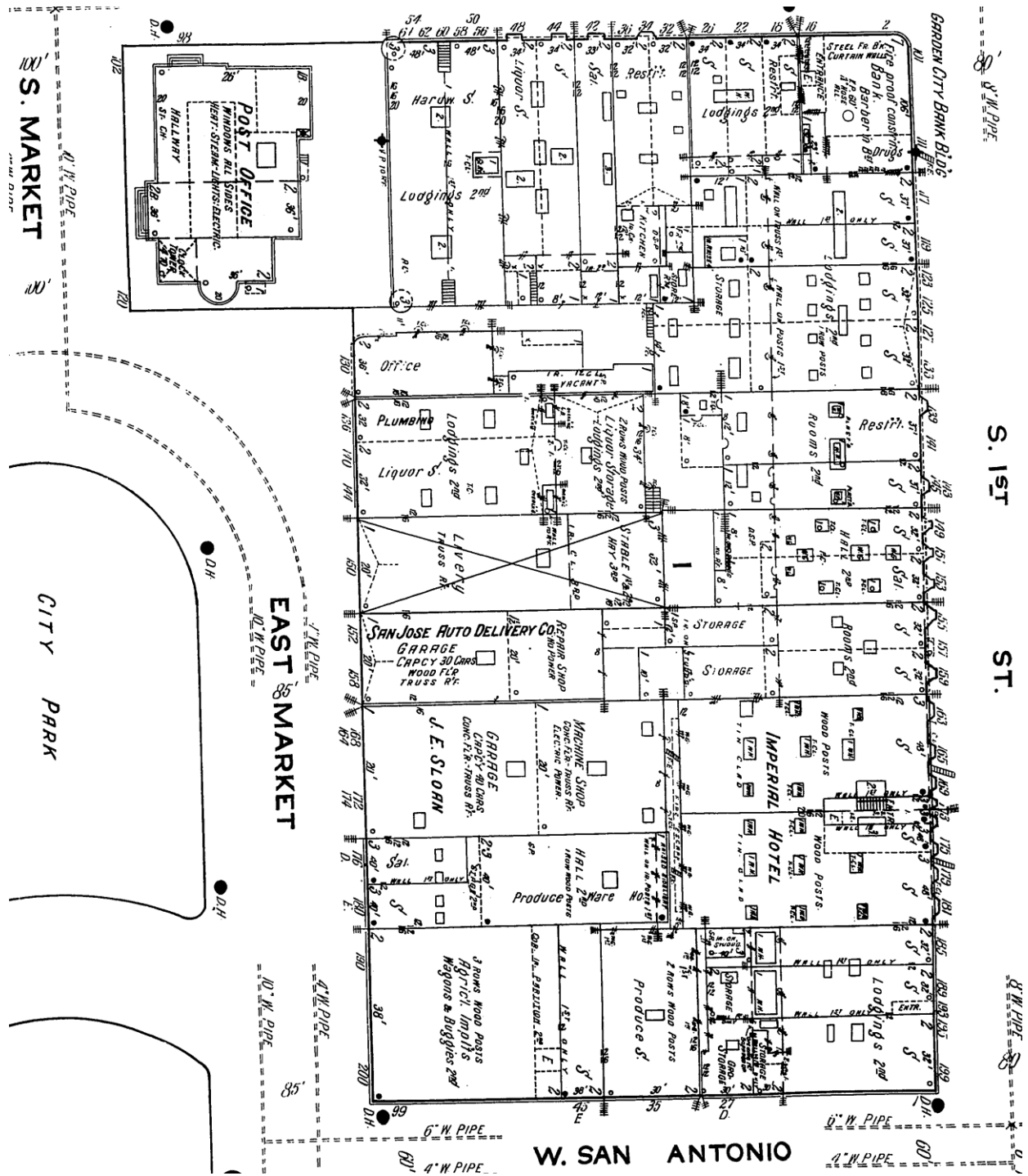
Map A.3f.

Block 1 Lot Configurations and Major Owners 1800-1889: 1880-1889

Block 1 of San Jose, Sanborn 1884

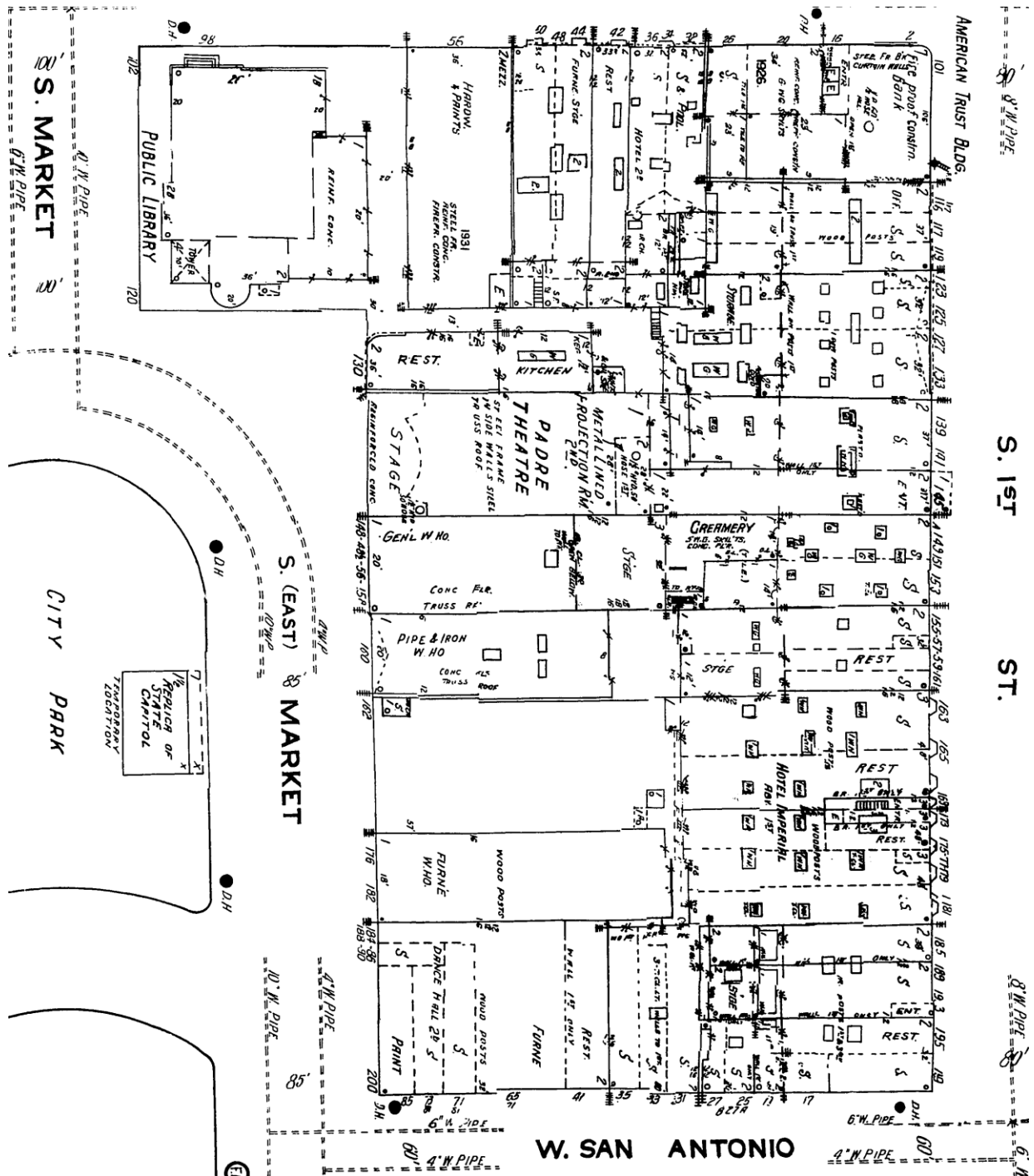


Map A.5. Block 1 of San Jose, Sanborn 1891

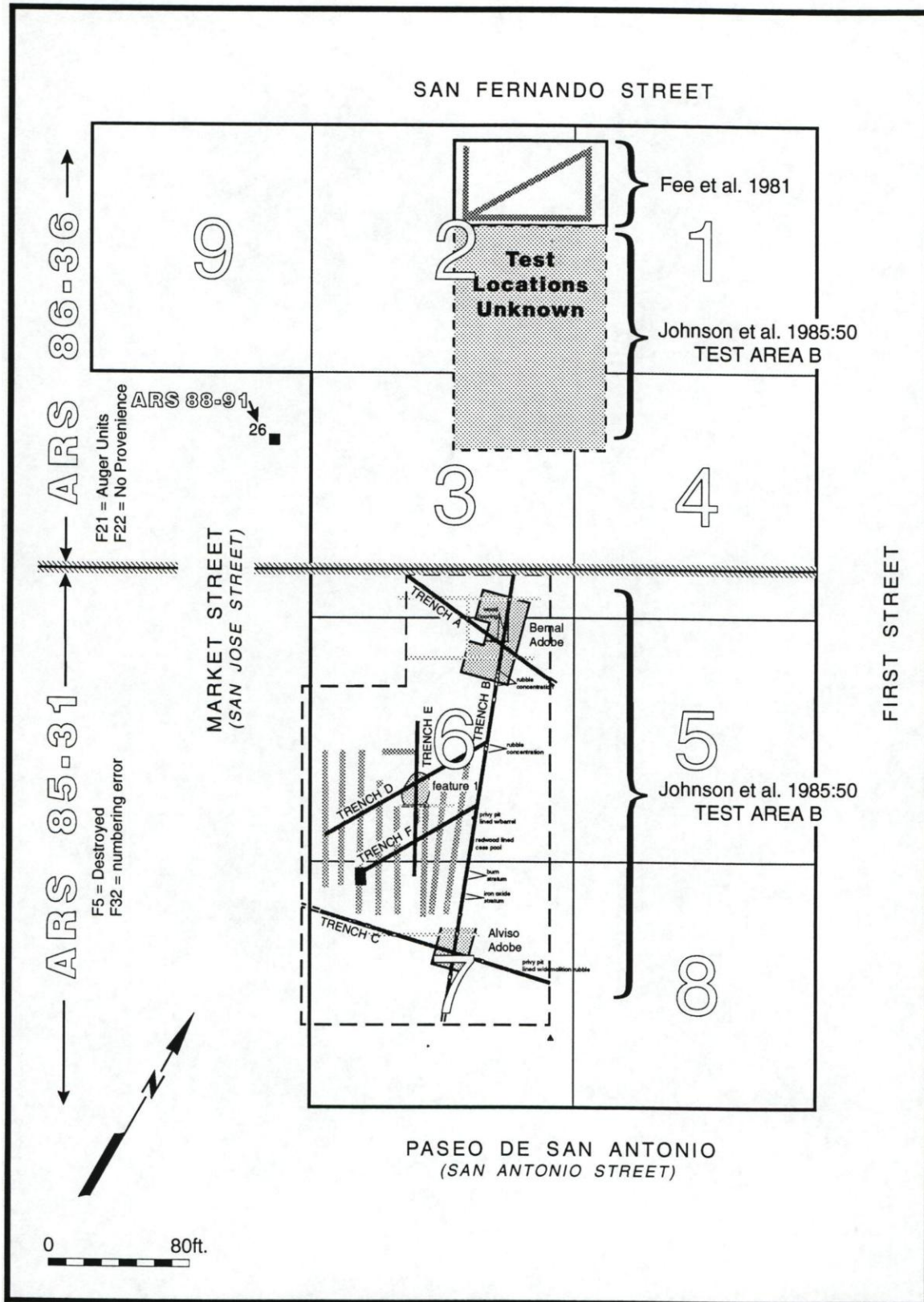


Map A.6.

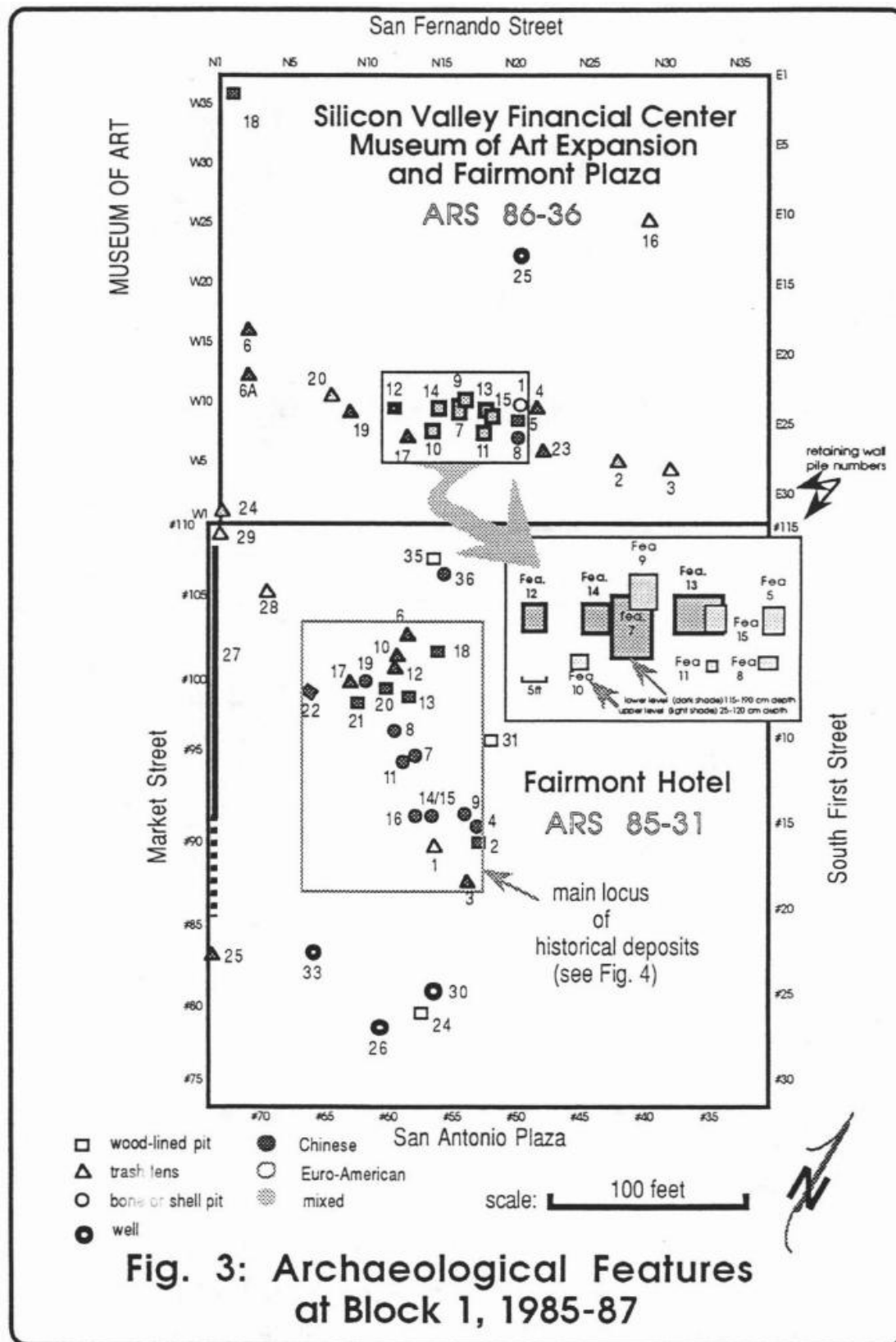
Block 1 of San Jose, Sanborn 1915



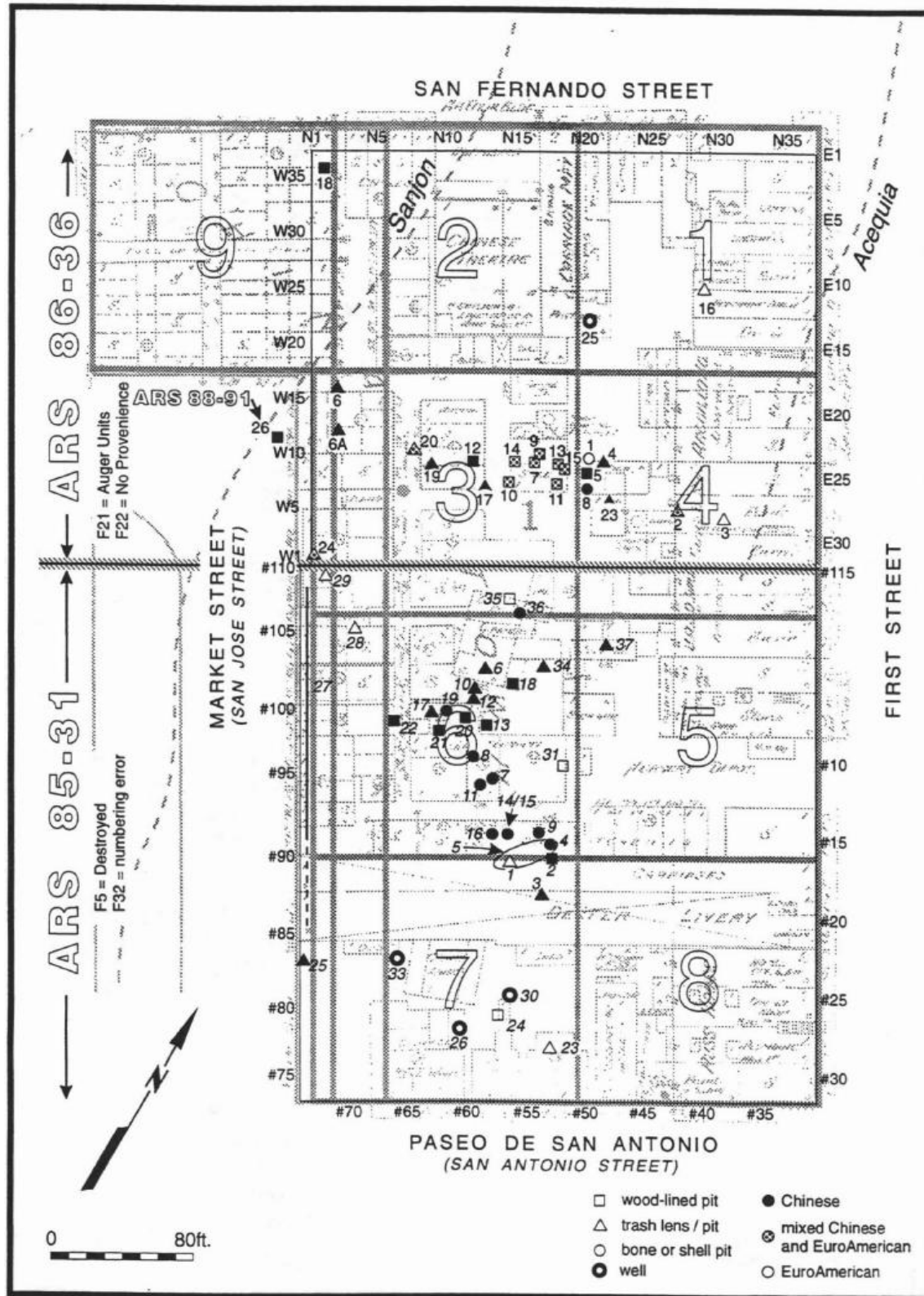
Map A.7. Block 1 of San Jose, Sanborn 1915-1950



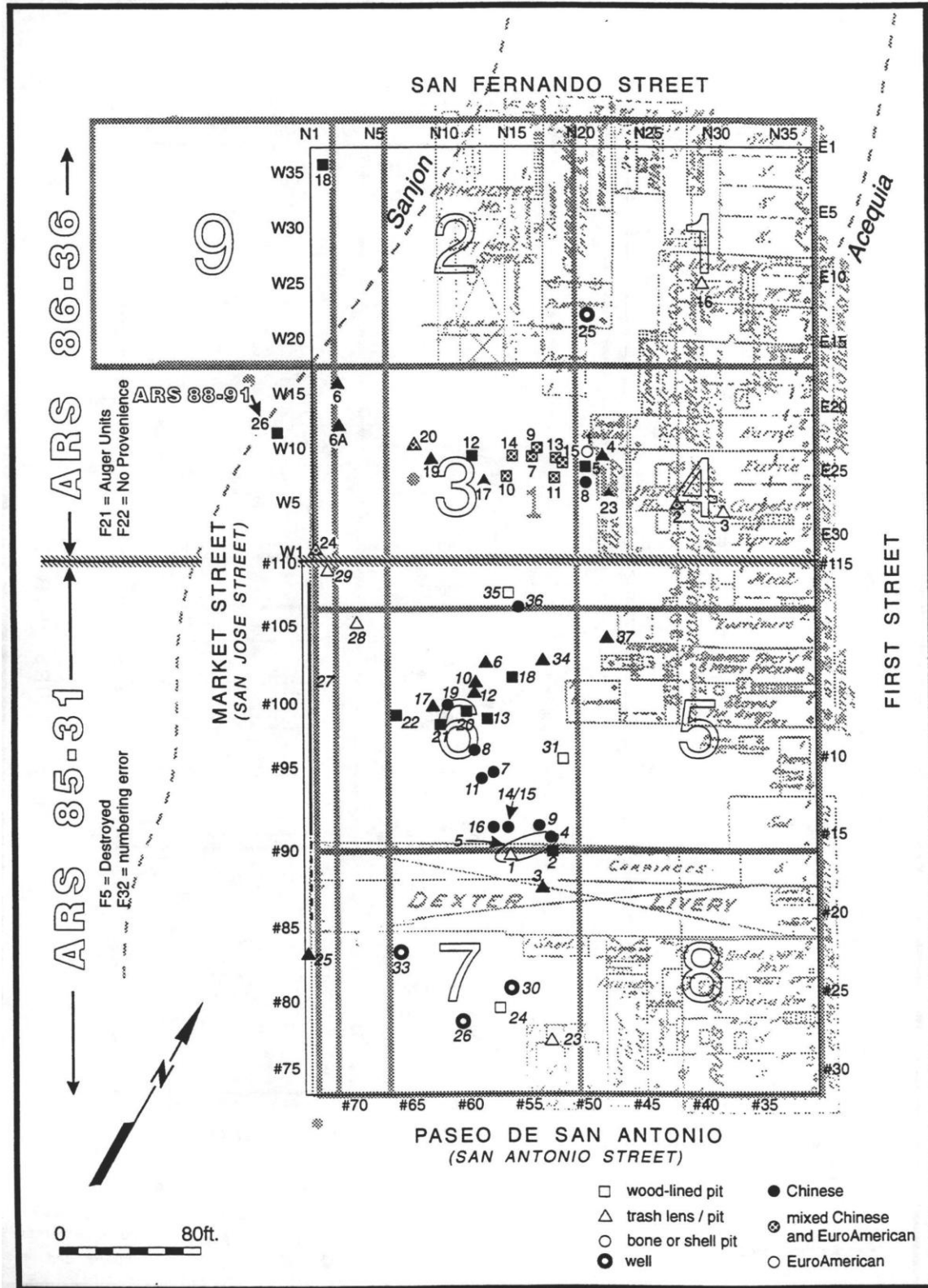
Map A.8. Previous Block 1 Archaeological Test Areas



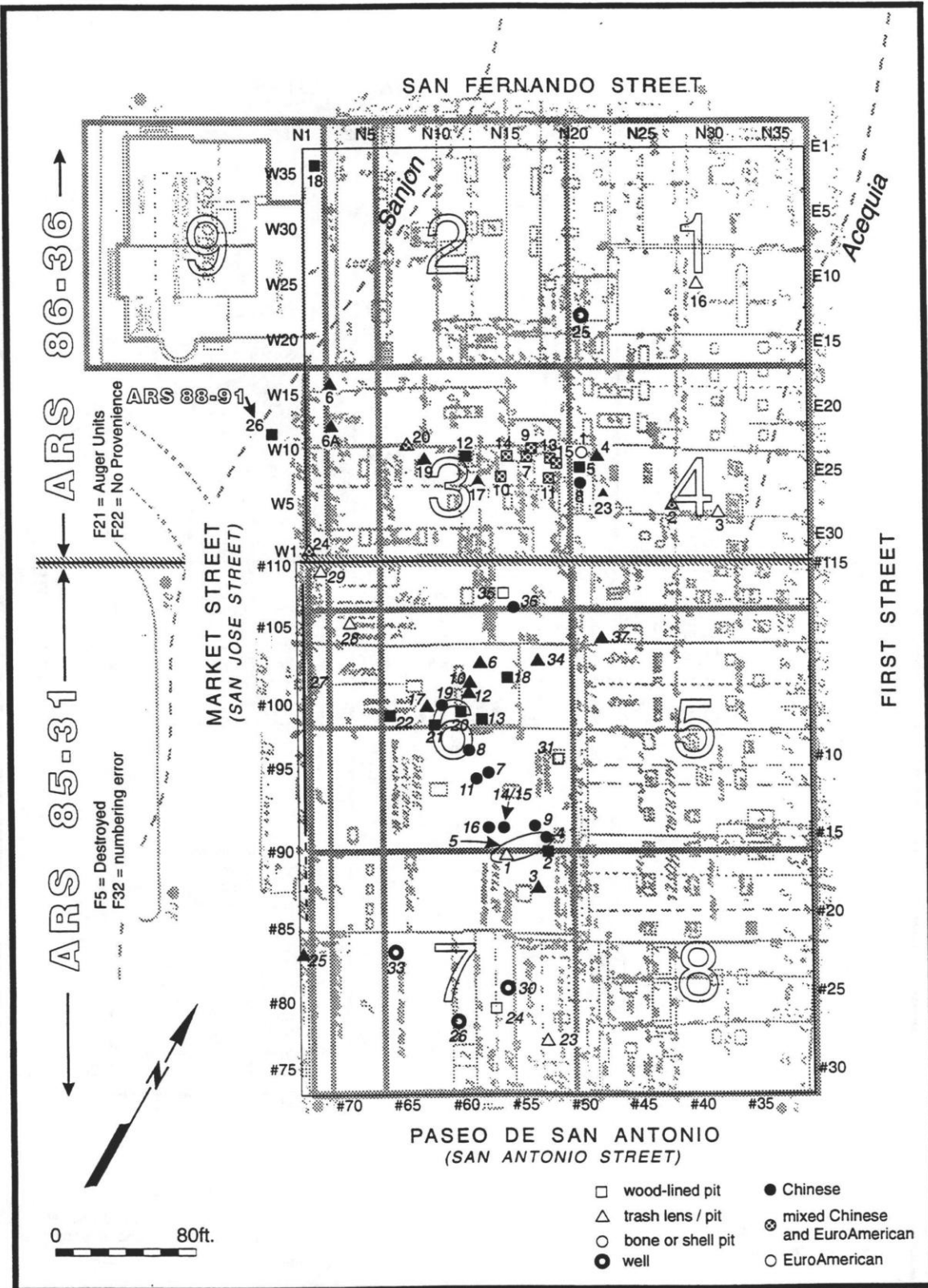
Map A.9. Archaeological Features at Block 1, 1985-1987



Map A.10. Block 1 Feature Locations 1884 (Parsons 1993:Figs. 2-3; ARS various; Roop et al. 1988; CSJ 1983; Sanborn 184)



Map A.11. Block 1 Feature Locations 1890 (Parsons 1993:Figs. 2-3; ARS various; Roop et al. 1988; CSJ 1983; Sanborn 1890)



Map A.12. Block 1 Feature Locations 1929 (Parsons 1993:Figs. 2-3; ARS various; Roop et al. 1988; CSJ 1983; Sanborn 1929)